

● *Just one is enough*

# **W5 Max**

*The 5-axis milling machine  
for dry and wet machining*

- ✓ All materials available
- ✓ Automatic disc changer
- ✓ Industrial grade automatic calibration



5  
Axes

18  
Tools

8  
Discs

40  
Pre-mill

48  
Blocks

Dry  
Wet

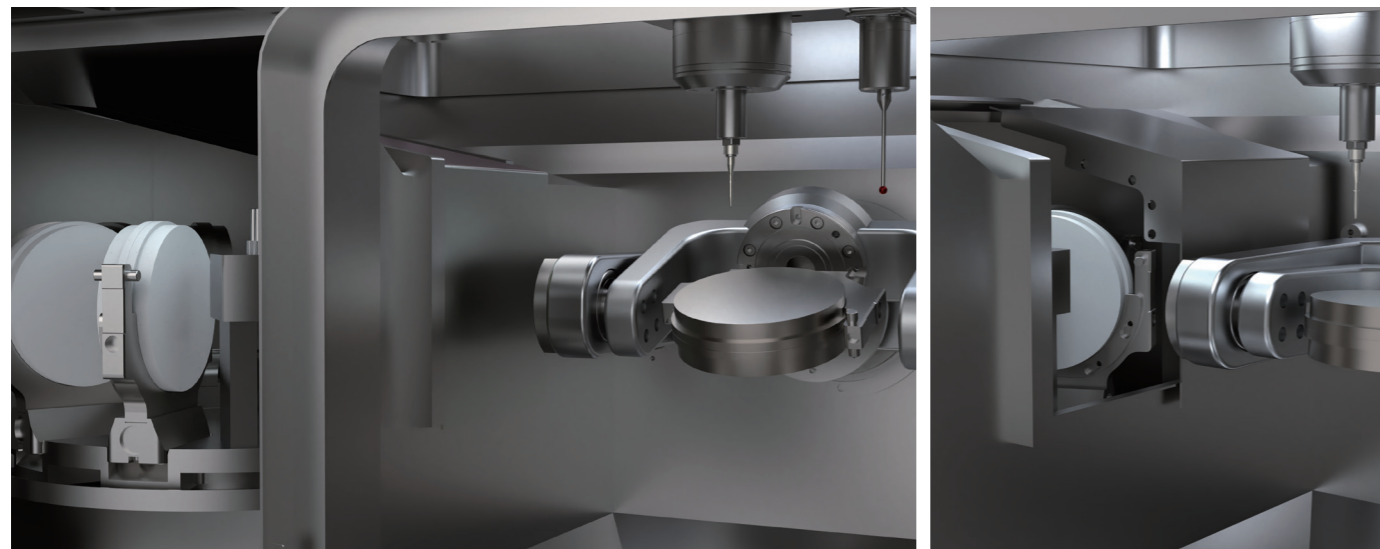
## HIGHLIGHTS!

The reason to choose W5 Max.



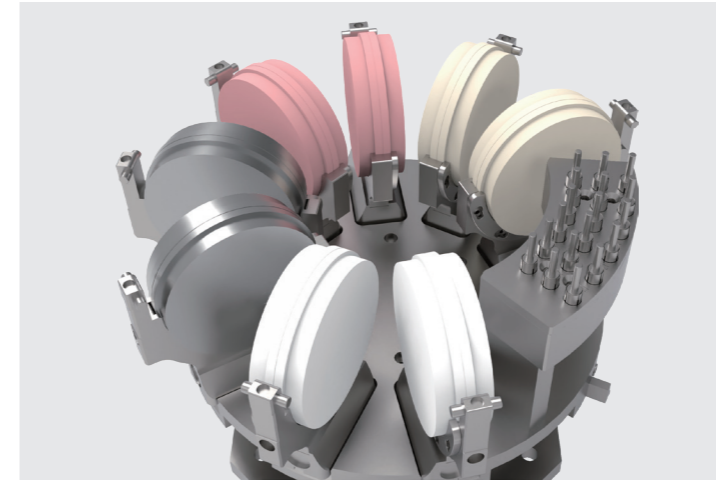
### Just one is enough

The W5 Max features an integrated floor-standing structure, enhancing the machine's rigidity and stability. It is also equipped with a powerful spindle, enabling the milling of metal materials and a vast range of other materials. This versatility meets the needs of many laboratories, offering a cost-effective solution for multi-purpose use.



### Comfort to use

The changer and tool magazine are separated from the working chamber, solving the problem of the changer and magazine being easily contaminated and difficult to clean. At the same time, you can select an automatic dry/wet switch module, making the W5 Max more convenient and comfortable to use.



### Non-stop machining

The W5 Max is equipped with an 8-slot rotary automatic disc changer, which enables continuous processing. Once the material to be processed has been clamped in the fixture and placed in the changer, the machine will automatically grab it and begin working. Ultimately, this results in greater efficiency in the use of equipment and a reduction in the time spent by personnel.



### Industrial-grade automatic calibration

The W5 Max is equipped with an industrial-grade probe head, ensuring high measurement accuracy. The device is integrated into the machine's working chamber and is capable of setting the automatic calibration frequency, enabling the calibration of each axis and automatic compensation within the system based on the calibration results. Furthermore, the probe is capable of locating prefabricated materials, such as premills, to guarantee precision during milling.



Bring changes to your laboratory, using W5 Max means you only need to manage one machine! One machine can complete the processing of all materials.

## MORE ADVANTAGES! MORE FEATURES!

### High accuracy

- C5 grade high precision ball screw and P grade guide rail
- Finite element analysis of equipment structure
- Premium spindle with precision bearing, powerful 3kW and 60,000 rpm
- High resolution encoder servo control system
- Rotary repetitive positioning high precision harmonic reducer
- 5 µm repetition accuracy

### Stable

- Cast iron body
- Floor-mounted structure, with a heavier base to reduce vibration
- Steel C-type B-axis

### Strong reliability

- Use well-known brand reliable accessories
- 24-month warranty for core non-destructive parts
- 24-hour remote service

### Strong scalability

- Built-in camera, dry and wet smart switching module, vacuum cleaner, remote control module, 3D printing secondary processing module

### High efficiency

- Automatic disc changer for 8 discs, 48 blocks or 40 abutments
- Automatic Tool Magazine for 18 tools
- Zero-point quick change

### Maximum variety

- 62mm diameter water-cooled spindle, good equipment rigidity, can process metal and all other dental materials
- 3 types of holders available for 98mm disc, block, pre-milled blank
- Large application due to a  $\pm 30^\circ$  rotation angle in the 5th axis, and up to 35 mm discs



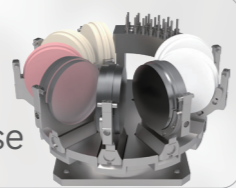
# DETAILS!

## 100% understanding of the W5 Max



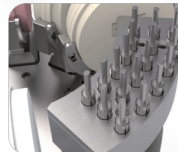
### ✓ Automatic Disc Changer

8-slot  
RFID identification  
Separate from the work warehouse



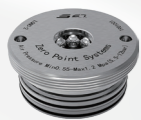
### ✓ Automatic Tool Magazine

18 tools  
Monitoring of tool wear length and breakage



### ✓ 3 holders

Available for discs/blocks/pre-milled  
Zero-point change clamp



### ✓ Appearance

24-inch HD display (Win10 system UI)  
All-glass material on front  
Illuminated logo and RGB LED  
Floor-standing movable body

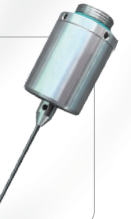
### ✓ Powerful Spindle

3.0kW  $\varnothing$ 62mm  
Torque 0.48Nm  
Water cooling



### ✓ Automatic calibration probe

Industrial grade, accuracy 3 $\mu$ m  
IP68 protection level



### ✓ Built-in camera

Real-time monitoring and recording of processing videos.

### ✓ Filtering system

35L liquid tank  
Easy filter replacement

## Machinable materials

Zirconia	Glass ceramics	Plastics   Wax	Composites
Pre-milled Blank	Titanium	Cocr	

## Applications

Crown   Bridge	Inlays   Onlays	Abutments	Telescopic crown
Model cast	Occlusal splint	Implant bar	Model tooth die
Veneer	Surgical guide	Denture	Screw-retained bridge
Secondary crown	Protrusion splint		

## Holder Types



### Half-open blank holder(C-CLAMP)

- Standard
- Suitable for processing  $\phi 98\text{mm}$  zirconia discs, resin discs, titanium discs, etc
- Enables 5-axis milling up to  $90^\circ$  axis adjustment
- Maximum material thickness 35mm



### Block holder

- Standard
  - 6 positions, suitable for blocks of glass ceramics, resin and zirconia
  - Glass-ceramic block size I13/C14/C16/B32/B40 available
  - PMMA and zirconia block Size
- 18\*13\*15/20\*15\*14/20\*15\*19/40\*15\*14/40\*15\*19/55\*15.5\*19 available



### Premill Abutment holder

- Standard
- 5 positions, Suitable for pre-milled blank
- Integrated systems Arum, Geo, manix, Yenadent, NT-trading
- Arum system standard, other system holder optional

## Milling Burs

### Zirconia milling burs

**T1 2.0/6.0mm**  
Roto, Diamond coated



**T2 1.0/6.0mm**  
Roto, Diamond coated



**T3 0.6/6.0mm**  
Roto, Diamond coated



**T4 1.5/6.0mm**  
Flat, Diamond coated



**T5 0.3/6.0mm**  
Roto, Diamond coated



### Resin milling burs

**T6 2.0/6.0mm**  
Roto, Diamond coated



**T7 1.0/6.0mm**  
Roto, Diamond coated



**T8 0.6/6.0mm**  
Roto, Diamond coated



**T9 1.5/6.0mm**  
Flat, Diamond coated



### Titanium milling burs

**T1 3.0/6.0mm**  
Roto, Diamond coated



**T2 2.0/6.0mm**  
Roto, Diamond coated



**T3 1.5/6.0mm**  
Roto, Diamond coated



**T4 1.0/6.0mm**  
Roto, Diamond coated



**T5 0.5/6.0mm**  
Roto, Diamond coated



**T6 2.0/6.0mm**  
End mill, Diamond coated



**T7 1.5/6.0mm**  
End mill, Diamond coated



**T8 1.5/6.0mm**  
End mill, Diamond coated



**T9 2.5/6.0mm**  
Drill, Diamond coated



**T10 1.5/6.0mm**  
Drill, Diamond coated



**T11 2.0/6.0mm**  
Flat, Diamond coated



**T12 1.0/6.0mm**  
Flat, Diamond coated



**T13 2.0/6.0mm**  
Flat, Diamond coated



### Glass ceramic milling burs

**T15 2.5/6.0mm**  
Roto, Diamond coated



**T16 1.0/6.0mm**  
Roto, Diamond coated



**T17 0.6/6.0mm**  
Drill, Diamond coated



## Vacuum Cleaner (Optional)

### Parameters

Power	360W(220V~50/60HZ)
Size	260mmx420mmx450mm
Capacity	3.6L



## Wet and dry conversion (Optional)

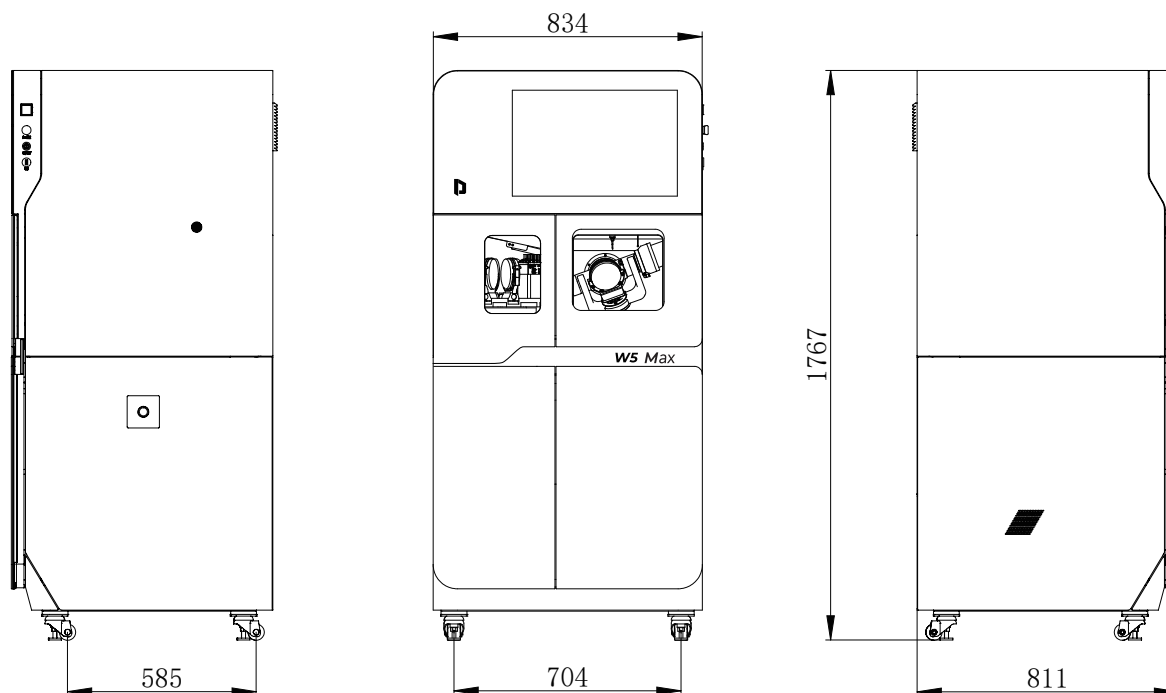
### Parameters

Size	335mmx225mmx350mm
Capacity	30L



General	
Processing mode	Dry&Wet
Millable material	Zirconia, Glass ceramics, Plastics   Wax, Composite, Premill, Titanium, CoCr
Applications	Crown   Bridge, Veneer, Inlay   Onlay, Abutment, Denture, Screw-retained bridge, Model cast, Occlusal splint, Surgical guide, Implant bar
Power	220V/3.5kW
Dimension	834 × 811 × 1767mm
Weight	330 kg
Air supply pressure	>0.5 MPa
Air flow	>100 L/min
Water tank capacity	35L
Structure parameters	
Basic construction	Integrated cast iron
Number of axes	5
X-axis working stroke	280mm
Y-axis working stroke	135mm
Z1-axis working stroke	105mm
Z2-axis working stroke	165mm
Rotary axis A-axis	0~360°
Rotary axis B-axis	-30°~+30°
Tool	18
Tool setting accuracy	0.01mm
Maximum feed speed	4000mm/min
Maximum idle speed	8000mm/min
Spindle	
Speed	10,000~60,000 rpm/min
Power	3.0kW
Collet	Φ6 mm
Cooling method	Water cooling
Scope of delivery	
CAM Software	Millbox / Hyperdent / WorkNC available
Clamps	Half-open blank holder(C-CLAMP)
	Block holder
	Premill Abutment holder

## W5 MAX Outline Dimensions(mm)



## DEPRAG (Zhengzhou) Dental Technology Co., Ltd.

Web: [depragdental.com](http://depragdental.com)

Email: [info@depragdental.com](mailto:info@depragdental.com)

Add: No.14, No.8 Floor, Building 7, No.289 West Third Ring Road, High-tech Industrial Development Zone, Zhengzhou City, Henan Province, China.